

SERVICES

REFINE ensures high product security and performance through standards in operator training, on-site and remote support, maintenance programs, and more.

We offer consulting in production setups with end-to-end production lines, and optimized

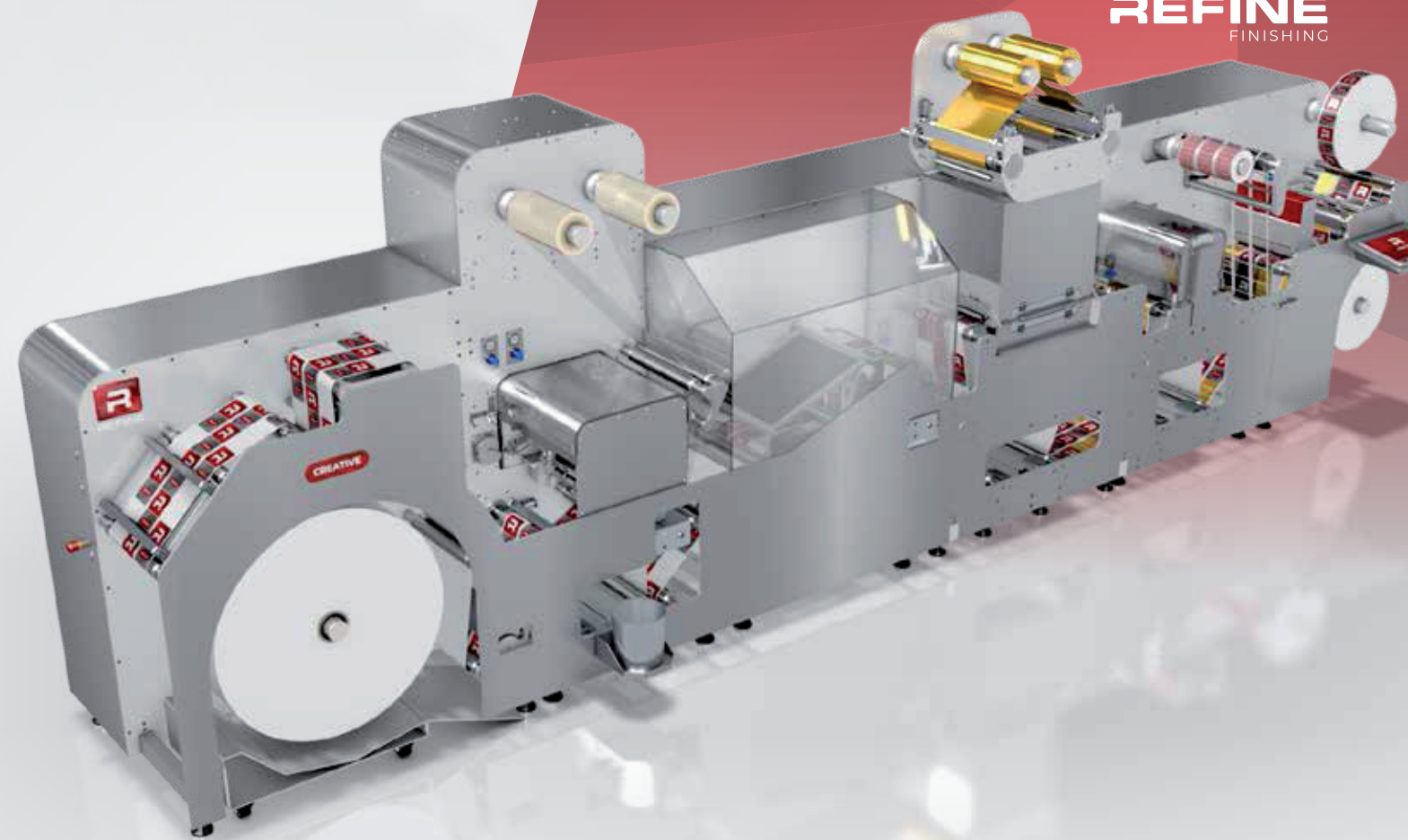
user-efficiency through workflow management.

REFINE is represented by a global team of service technicians, and an international sales network, present in multiple showrooms and technology centers around the world.



refinefinishing.com

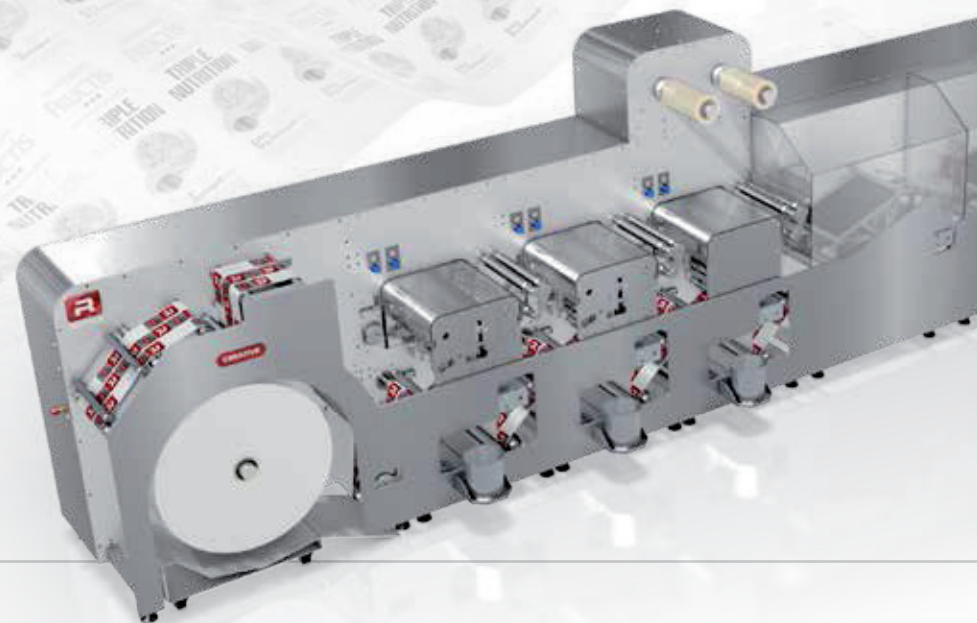
CREATIVE REFINE FINISHING



The clever way
to convert

Agente Esclusivo per l'Italia

 **INGLESE 65**
since 1956
www.inglesesrl.com

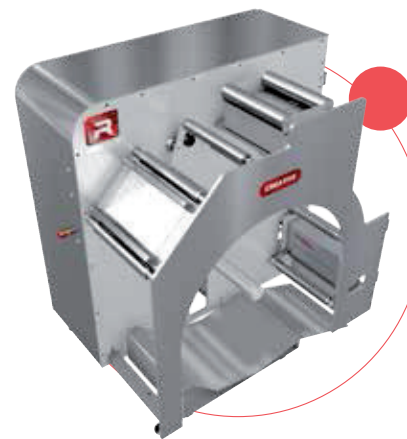


The clever way to convert

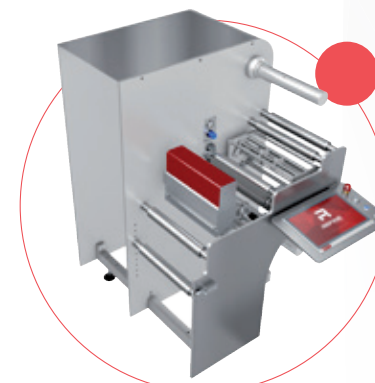
Short and simple. Our converting solutions are clever – we think software, automation, and user-efficiency first. And THEN we build the machinery.

The Creative is no different. With easily adaptable software, and a clever modular build, the Creative is a future-proof investment in labels and flexible packaging production.

At REFINE, we craft intelligent converting and finishing solutions that work for our customers, and ensure high product security and performance through standards in operator training, on-site and remote support, maintenance programs, and more.



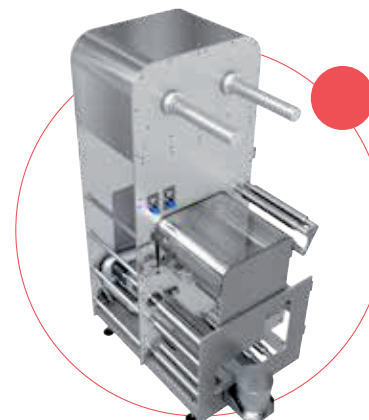
Unwinder
Servo-driven unwinder module with 3" expanding air shaft, integrated web guide, magnetic splicing table, and a servo-driven waste matrix rewind. Enables high tension stability and processing of delicate materials.



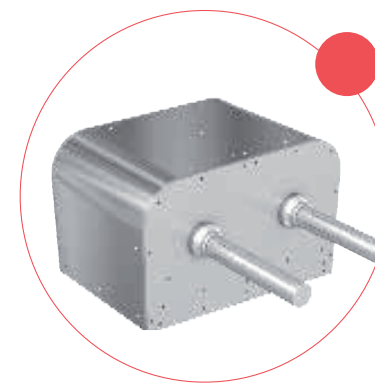
Rewinder
Servo-driven rewinder module with 3" expanding air shaft, and an oscillating razor knife module, incl. 5 knives. Control unit with touch screen HMI and advanced Safety PLC system. Dual rewind option available.



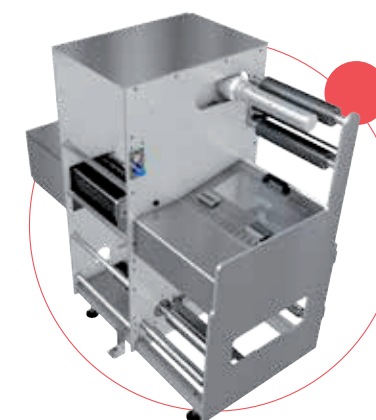
Digital Print Module
Connect the Creative with any Digital printing module and ensure low waste, optimal lifetime of mechanical parts, full data integration, remote access for support, maintenance, and more.



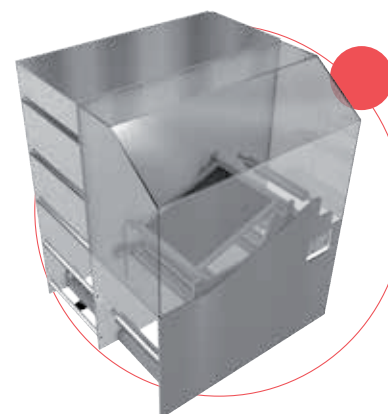
Flexo Module
Flexographic printing and spot varnishing module - servo-driven with full 2D side register control, GEW UV system, and Hamamatsu UV LED. Semi-rotation and cold foil available.



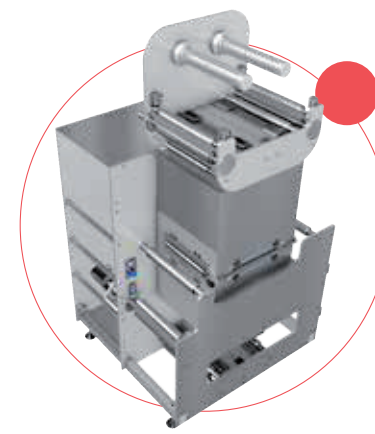
Cold Foil Flexo Add-on
Cold foil in combination with the flexographic printing module.



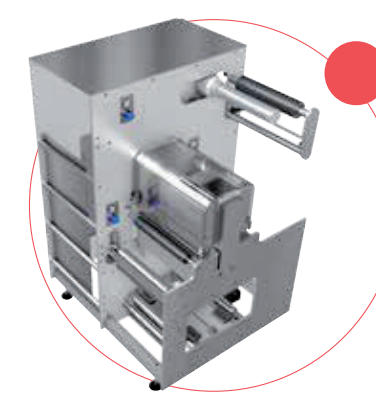
Laser Die-Cutter
Laser die-cutting module. High Quality 450 W laser source and galvo system for precise high-speed die-cutting. Features a high-speed, servo-driven, no-contact waste matrix rewind with coated rollers. Various laser configurations available on request.



Screen Module
Flat bed UV screen printing module with inline, high speed operations. Features software controlled adjustment of register position in 2 dimensions and skew. Print area is 330 x 330 mm, web speed up to 5.000 imp/h and 30 m/min.



Hot Stamp
Hot stamp with 50T pressure, up to 5 x stamps per second. Features full 2D side register control, foil saving function, and a tool plate kit for quick changeovers.



Die-Cutter
Semi- or full-rotary die-cutting module. Up to 65 m/min in semi-rotary and 200 m/min in full-rotary. Features a high-speed, servo-driven, no-contact waste matrix rewind. Back-scoring option available.

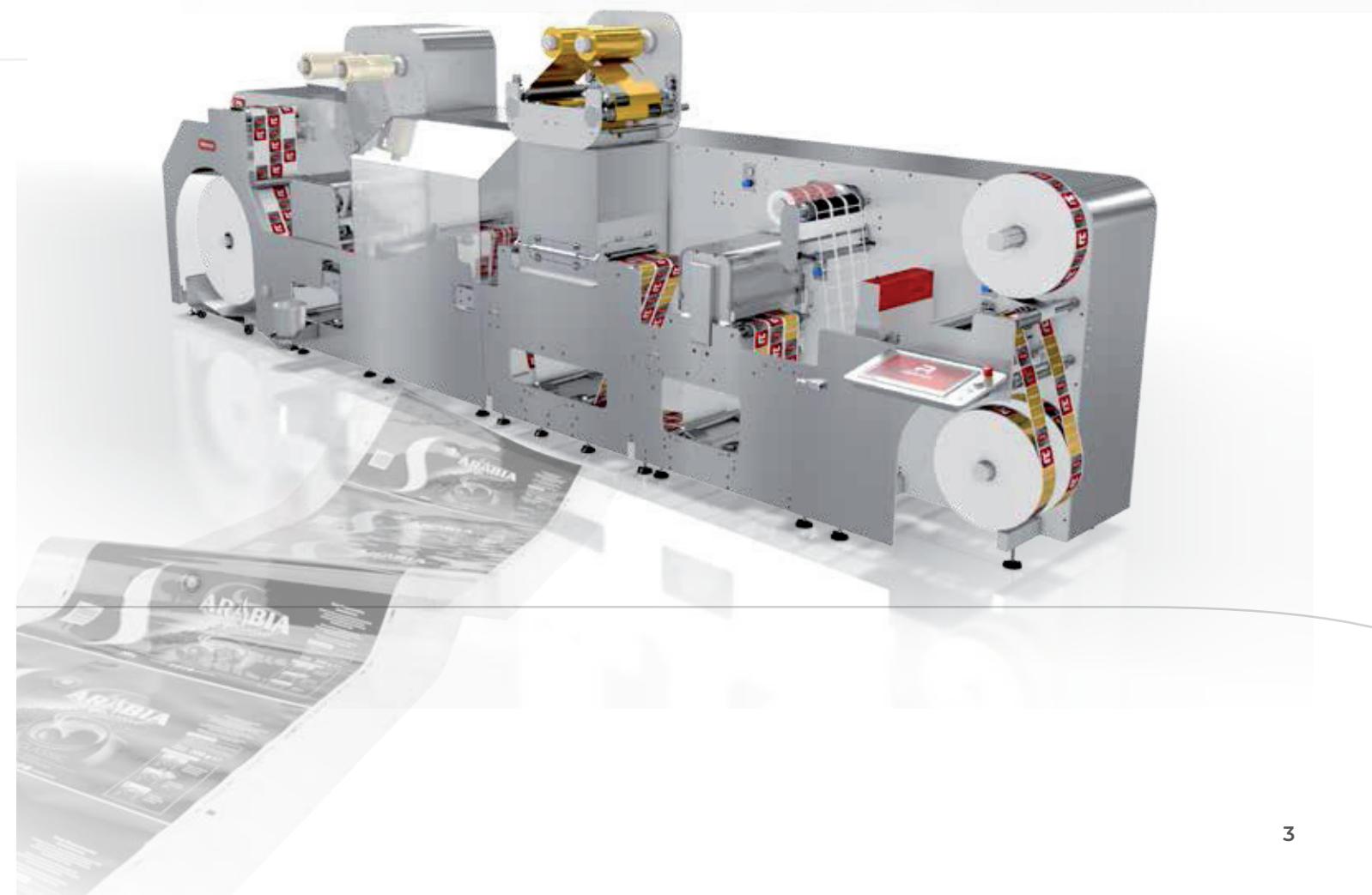


CREATIVE

Modular, intuitive finishing line that allows custom configurations to meet exact production needs and requirements.

Connect the Creative with any Stand-alone Digital or Conventional Printing Press

The REFINE Buffer Module bridges the gap and allows you to upgrade your printing press with an in-line automated finishing line. Compatible with a wide range of presses, the Buffer module features a precise web-guiding system, a servo-driven buffer section, and an integrated splicing table, all to ensure stable operating conditions, short setup times, and trouble-free production.

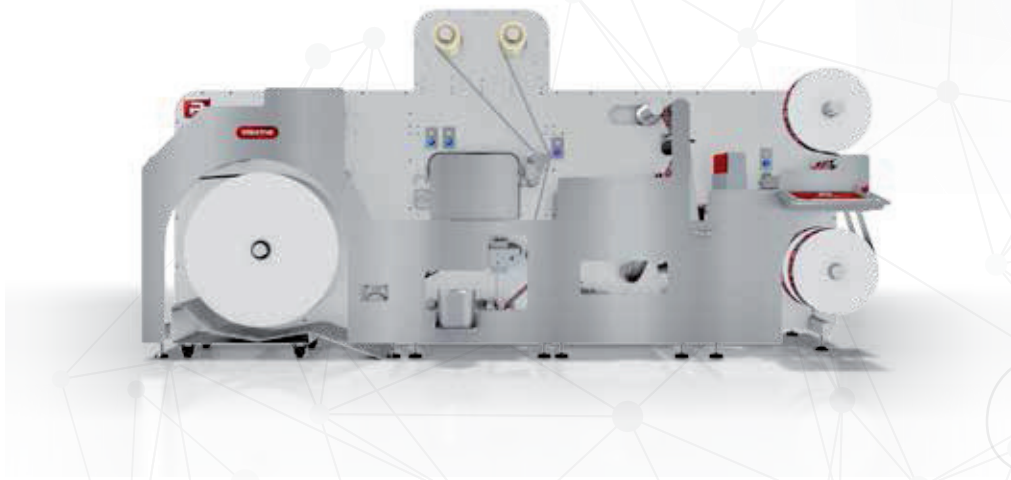


REFINE Creative is available
in **NUMEROUS** SOLUTIONS

Connecting
the
dots

1 **ULTIMATE FLEXO AND LASER DIE-CUTTING SOLUTION**
The ultimate solution for finishing of digital and conventional printed labels, complete with a fully automated flexo printing station, cold foil and lamination capabilities, and a laser die-cutting module.

- 1 3 4 7 9



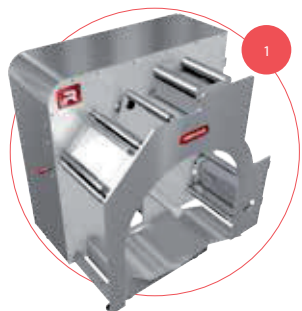
2 **WINE LABEL SOLUTION**
Embellishment solution perfect for wine label production. Enables eye-catching features with cold foil and lamination capabilities, flexo and screen printing, as well as flat-bed hot stamping and embossing.

- 1 3 4 5 6 8 9

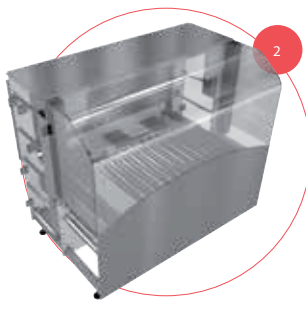


3 **COSMETIC EMBELLISHMENT SOLUTION**
Embellishment solution perfect for stand-out cosmetics, health and beauty labels. Features multiple flexo and screen printing stations, cold foil and lamination capabilities, as well as flat-bed hot stamping and embossing.

- 1 3 3 3 4 5 5 6 6 8 9



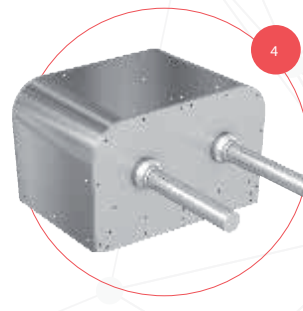
Unwinder



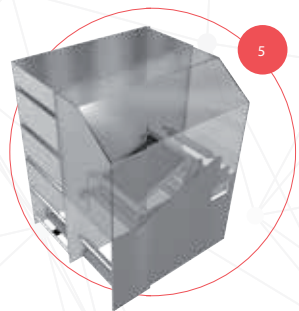
Digital Print
Module



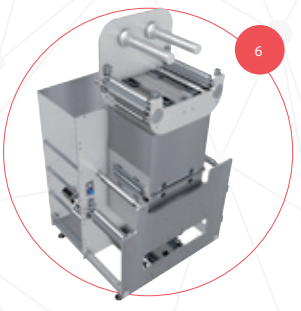
Flexo Module



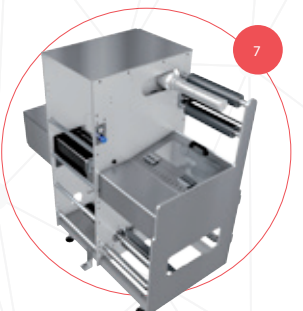
Cold Foil Flexo
Add-On



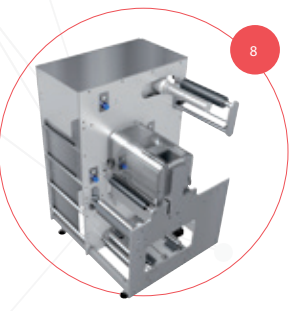
Screen Module



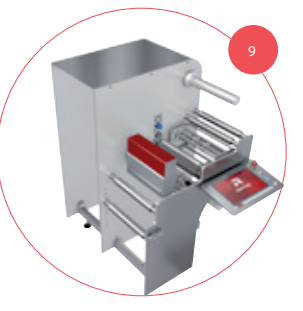
Hot Stamp



Laser Die-Cutter



Die-Cutter



Rewinder