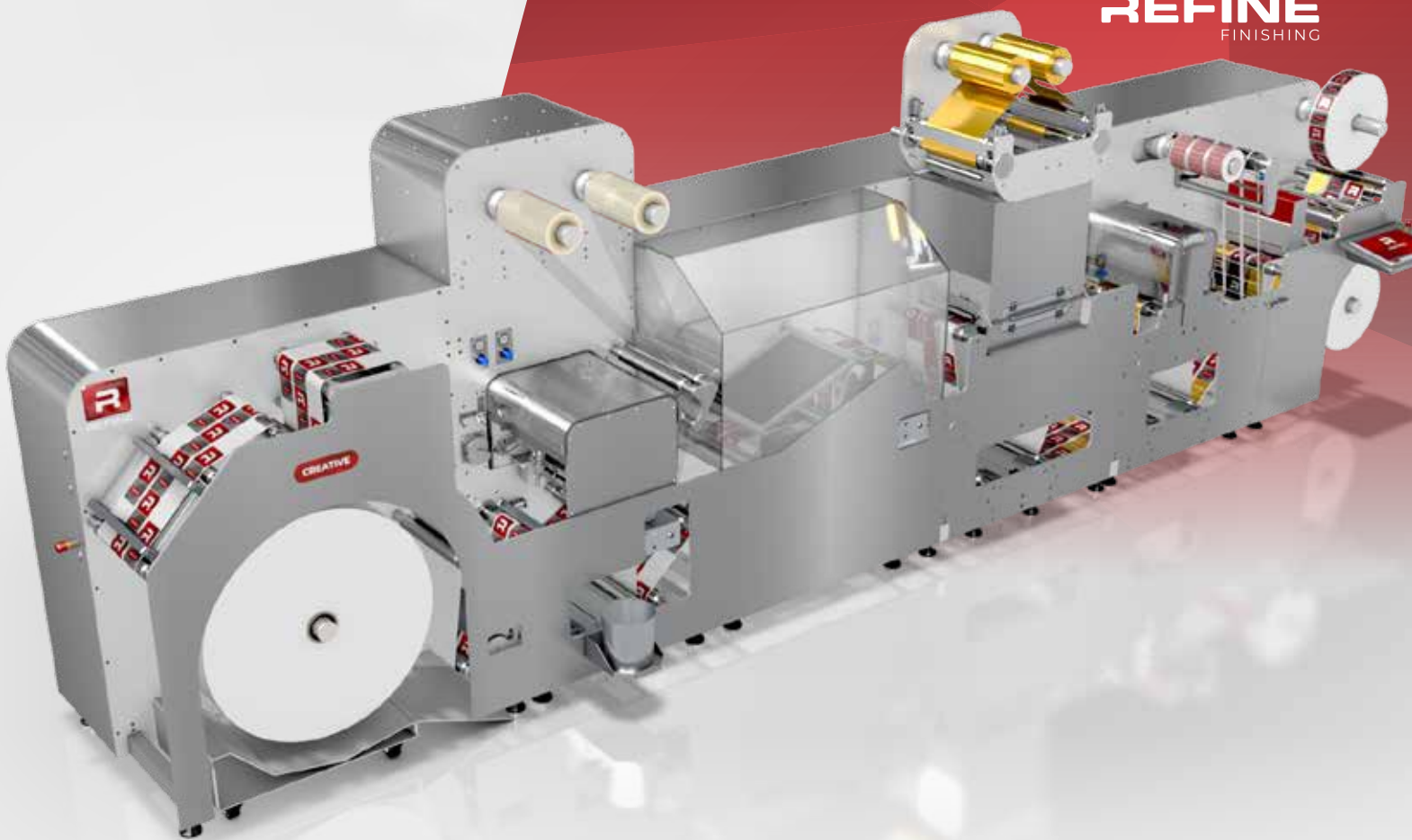
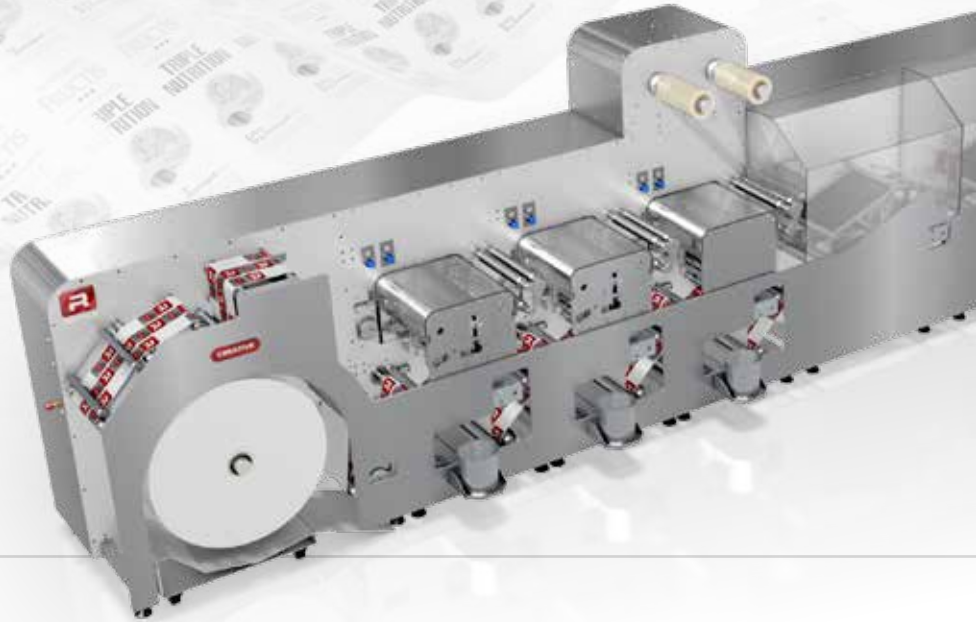


# CREATIVE

**REFINE**  
FINISHING



*The clever way  
to convert*

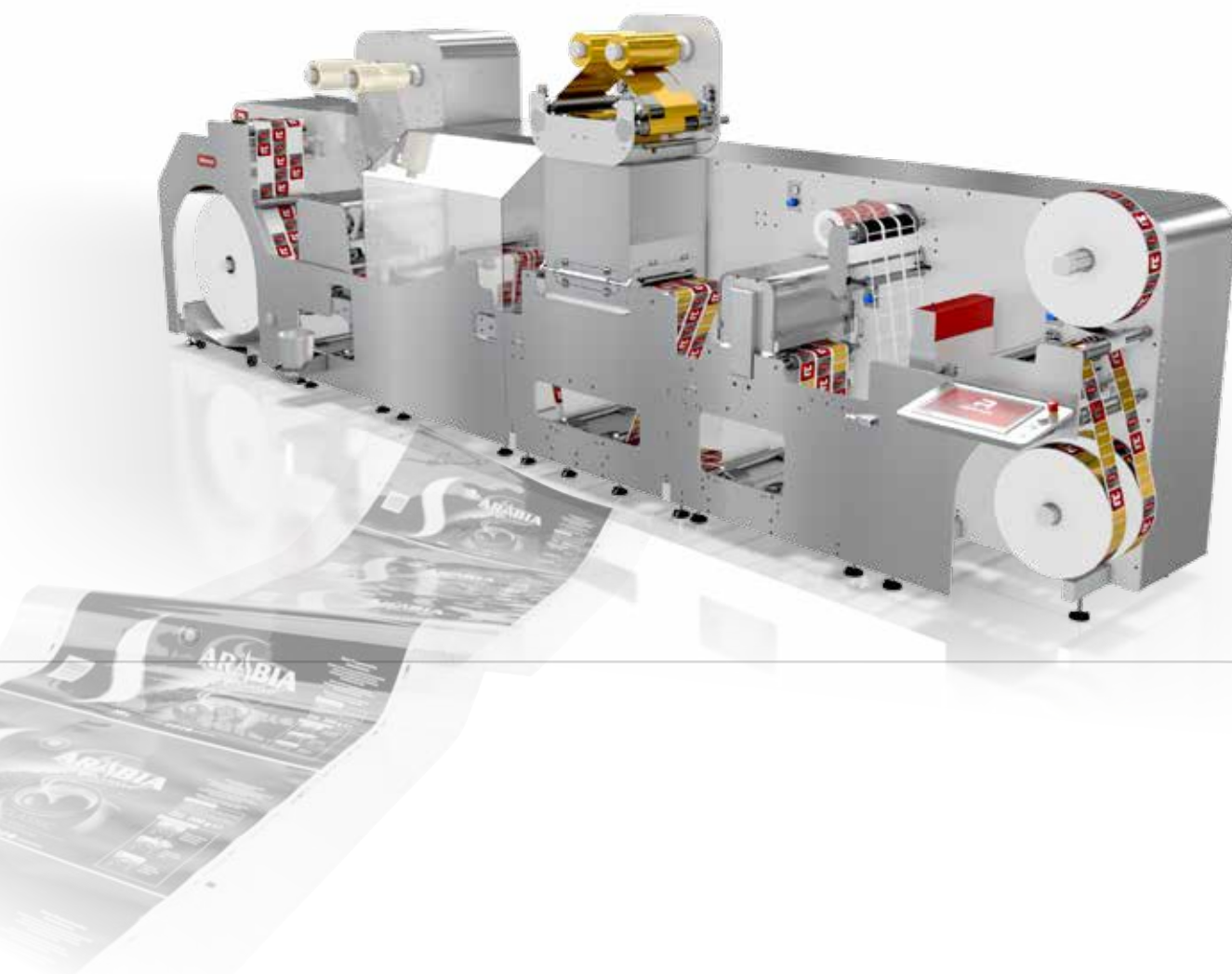
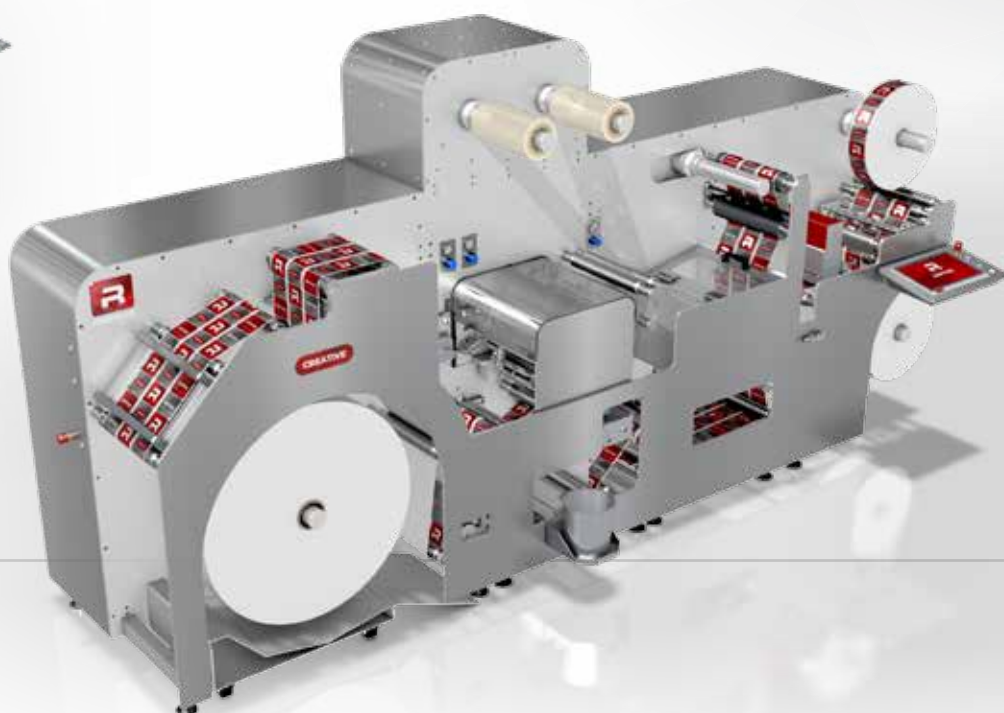
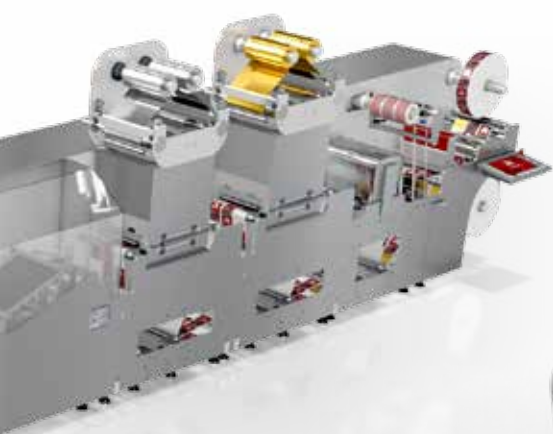


## ***The clever way to convert***

Short and simple. Our converting solutions are clever – we think software, automation, and user-efficiency first. And THEN we build the machinery.

The Creative is no different. With easily adaptable software, and a clever modular build, the Creative is a future-proof investment in labels and flexible packaging production.

At REFINE, we craft intelligent converting and finishing solutions that work for our customers, and ensure high product security and performance through standards in operator training, on-site and remote support, maintenance programs, and more.



# REFINE Creative is available in **NUMEROUS SOLUTIONS**

1

## **ULTIMATE FLEXO AND LASER DIE-CUTTING SOLUTION**

The ultimate solution for finishing of digital and conventional printed labels, complete with a fully automated flexo printing station, cold foil and lamination capabilities, and a laser die-cutting module.

1

3

4

7

9

2

## **WINE LABEL SOLUTION**

Embellishment solution perfect for wine label production. Enables eye-catching features with cold foil and lamination capabilities, flexo and screen printing, as well as flat-bed hot stamping and embossing.

1

3

4

5

6

8

9

3

## **COSMETIC EMBELLISHMENT SOLUTION**

Embellishment solution perfect for stand-out cosmetics, health and beauty labels. Features multiple flexo and screen printing stations, cold foil and lamination capabilities, as well as flat-bed hot stamping and embossing.

1

3

3

3

4

5

5

6

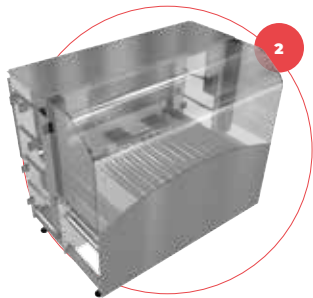
6

8

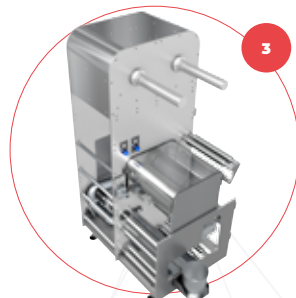
9



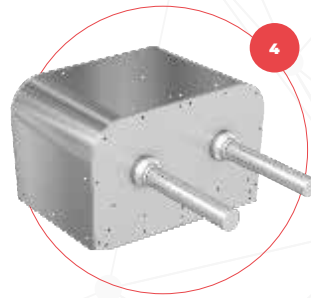
Unwinder



Digital Print  
Module



Flexo Module



Cold Foil Flexo  
Add-On



Screen

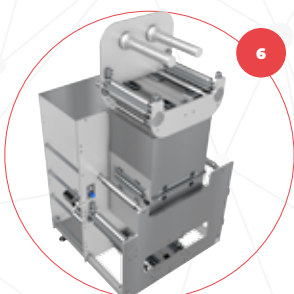


# Connecting the dots



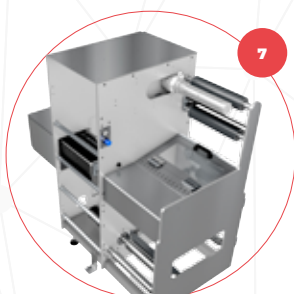
5

Module



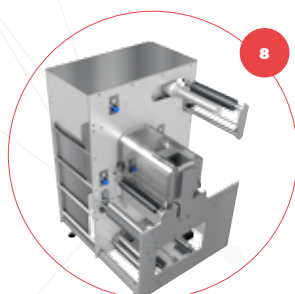
6

Hot Stamp



7

Laser Die-Cutter



8

Die-Cutter



9

Rewinder



# CREATIVE

**Modular, intuitive finishing line that allows custom configurations to meet exact production needs and requirements.**

## ***Connect the Creative with any Stand-alone Digital or Conventional Printing Press***

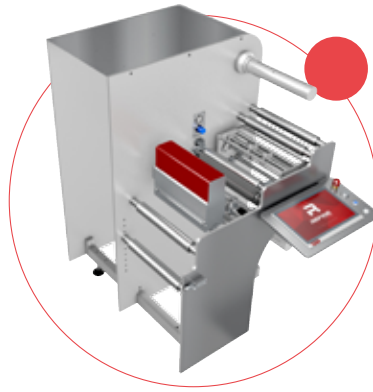
The REFINE Buffer Module bridges the gap and allows you to upgrade your printing press with an in-line automated finishing line. Compatible with a wide range of presses, the Buffer module features a precise web-guiding system, a servo-driven buffer section, and an integrated splicing table, all to ensure stable operating conditions, short setup times, and trouble-free production.





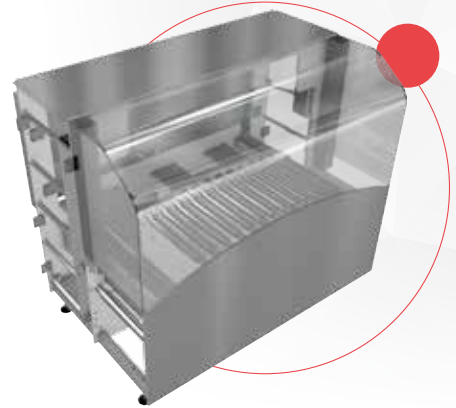
### Unwinder

Servo-driven unwinder module with 3" expanding air shaft, integrated web guide, magnetic splicing table, and a servo-driven waste matrix rewind. Enables high tension stability and processing of delicate materials.



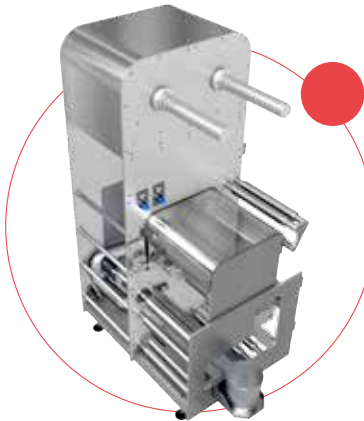
### Rewinder

Servo-driven rewinder module with 3" expanding air shaft, and an oscillating razor knife module, incl. 5 knives. Control unit with touch screen HMI and advanced Safety PLC system. Dual rewind option available.



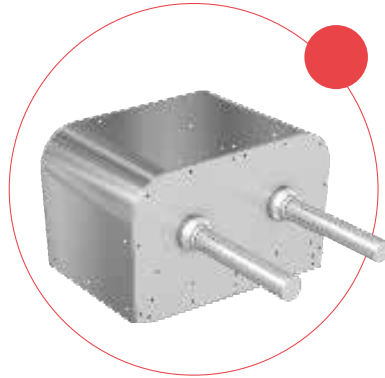
### Digital Print Module

Connect the Creative with any Digital printing module and ensure low waste, optimal lifetime of mechanical parts, full data integration, remote access for support, maintenance, and more.



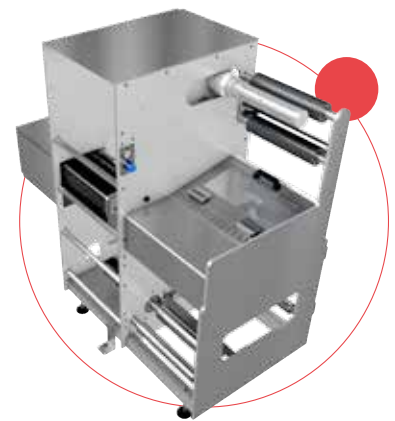
### Flexo Module

Flexographic printing and spot varnishing module - servo-driven with full 2D side register control, GEW UV system, and Hamamatsu UV LED. Semi-rotation and cold foil available.



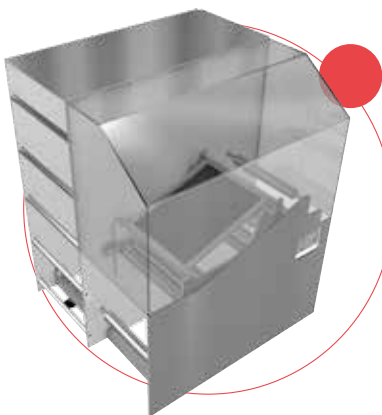
### Cold Foil Flexo Add-on

Cold foil in combination with the flexographic printing module.



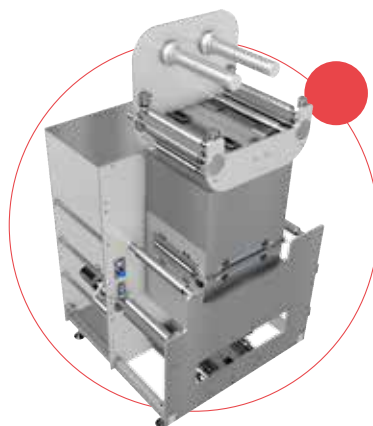
### Laser Die-Cutter

Laser die-cutting module. High Quality 450 W laser source and galvo system for precise high-speed die-cutting. Features a high-speed, servo-driven, no-contact waste matrix rewind with coated rollers. Various laser configurations available on request.



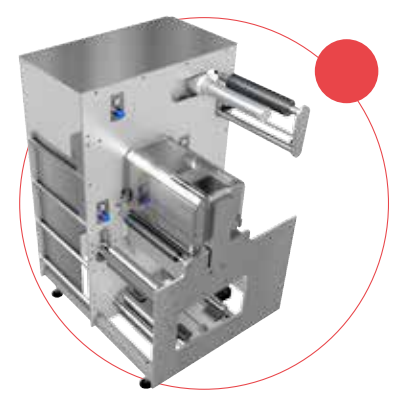
### Screen Module

Flat bed UV screen printing module with inline, high speed operations. Features software controlled adjustment of register position in 2 dimensions and skew. Print area is 330 x 330 mm, web speed up to 5.000 imp/h and 30 m/min.



### Hot Stamp

Hot stamp with 50T pressure, up to 5 x stamps per second. Features full 2D side register control, foil saving function, and a tool plate kit for quick changeovers.



### Die-Cutter

Semi- or full-rotary die-cutting module. Up to 65 m/min in semi-rotary and 200 m/min in full-rotary. Features a high-speed, servo-driven, no-contact waste matrix rewind. Back-scoring option available.

# SERVICES

REFINE ensures high product security and performance through standards in operator training, on-site and remote support, maintenance programs, and more.

We offer consulting in production setups with end-to-end production lines, and optimized

user-efficiency through workflow management.

REFINE is represented by a global team of service technicians, and an international sales network, present in multiple showrooms and technology centers around the world.



[refinefinishing.com](https://refinefinishing.com)